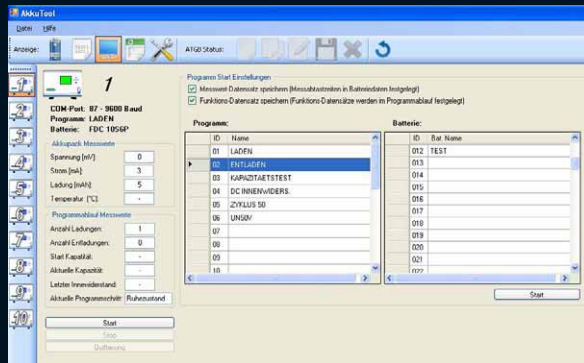


Easy-to-use Software “Akku-Tool”

- Battery Parameter Creator
- Program Parameter Creator



Scope of Delivery

- Operating software “Akku-Tool”
- Quickstart cable
- USB cable
- Power cord
- Set of crocodile connectors
- Replacement battery plug

We also supply customized solutions.



www.batteryuniversity.eu



www.batteryuniversity.eu

Am Sportplatz 30
63791 Karlstein am Main
Germany

Phone +49 6188 99410-0
Fax +49 6188 99410-20

ATGB@batteryuniversity.eu
www.batteryuniversity.eu

© batteryuniversity.eu® 1.2011. All rights reserved.
Subject to errors and technical changes.

ATGB 1200

Battery Test Equipment

Charging · Discharging ·
Life Cycle Test · DC-Impedance Test ·
Reconditioning

Battery Test Equipment

for all standard battery technologies according the demands of quality assurance and product development



Advantages of the ATGB 1200

- Option of high peak loads
- Second output for charging
- Power supply simulation
- Data interface for computer connection
- Temperature measurement
- Sense line for exact voltage measurement
- Storage of up to 95 battery data sets
- 25 programs storable, each having 50 steps

Scope of Service

- Capacity test
- Charging/discharging
- DC-Impedance test
- Life cycle test
- Reconditioning
- Customer specific programs, individually programmable testing procedures

Technologies

Applicable for	Nom. Voltage	Cells in series
Li-Ion	3.6 V - 36.0 V	1-10 cells
Li-FePh	3.3 V - 39.6 V	1-12 cells
Li-Titanate	2.3 V - 34.5 V	1-15 cells
Ni-Cd	1.2 V - 36.0 V	1-30 cells
Ni-MH	1.2 V - 36.0 V	1-30 cells
Pb (Lead Acid)	2.0 V - 36.0 V	1-18 cells

Housing

Material

- Body: steel plate, powder coated
- Bottom plate: steel plate, zinc coated

Dimensions

- 210 x 151 x 301 mm

Weight

- 5 kg

Technical Data

- Operating temperature: +5°C to +45°C

EMC-Standard

- Immunity: EN 61000-6-2
- Emission: EN 61000-6-3

Input

- 100 V - 240 V (50 Hz - 60 Hz)

Output

Battery

- Voltage: 0 V - 48 V
- Charge current: 0 A - 10 A (max. 200 W)
- Discharge current: 0 A - 10 A (max. 200 W)
- Peak discharge: 50 A

Power Supply

- Voltage: 1.5 V - 48 V
- Supply current: 10 A (max. 200 W)



Interfaces

- D-Sub power connector
- Data interface: USB B-plug